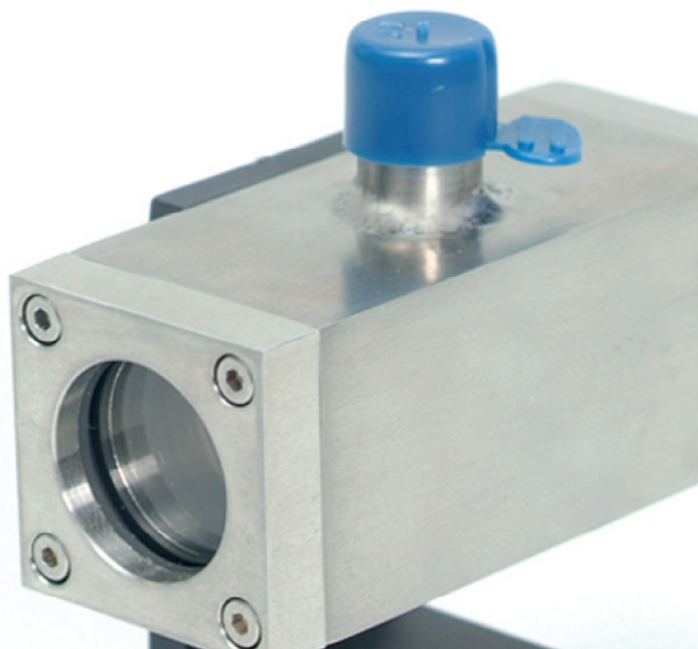
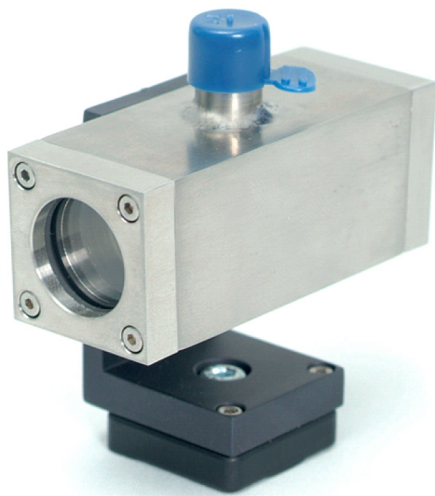


Q-MACS RGC50

Absorption cells



technical specification

The Q-MACS reference gas cell (RGC) is a compact and robust solution for placing sealed reference gas probes in absorption spectroscopic setups. With its metallic body a reliable interface for the integration in fixed optical setups and a high flexibility to adapt the design on specific customer requirements could be ensured. Moreover, its very compact dimensions allow an efficient and accurate filling. A large variety of molecular gases is routinely filled with high purity into this cell. With its features, the Q-MACS RGC is used in a wide range of laboratory and industrial applications.

Q-MACS RGC50 features

- compact and robust design
- various long path lengths available
- small volume for efficient handling
- refilling option by vacuum seal off valve
- easy integration in existing optical setups

General

description	compact gas cell with fixed filling for providing absorption signals as reference
dimensions	25 mm x 25 mm x 63 mm (L x H x D) ^{[1][2]} ^[1] without valve ^[2] other dimensions available on request
weight	156 g

mechanical interface

window material	potassium bromide (KBr), uncoated *
cell body	* other material on request
volume	stainless steel, FKM O-rings 15.2 cm ³ ** ** customized solution on request
gas connectors	
pressure range	10 ⁻⁵ mbar to 1 bar
gas leak rate	<10 ⁻⁹ mbar-l/s

optical interface

input hole diameter	17 mm
mirror diameter	50 mm
wavelength range	2 μm to 12 μm
coupling losses	<20 %
path length	50 m ** ** customized solution on request

operating and storage conditions

operating temperature	15 °C to 25 °C
operating humidity	15 % to 75 % (rel.)
storage temperature	5 °C to 35 °C ^[3] ^[3] rapid temperature changes to be avoided
storage humidity	10 % to 100 % (rel.)